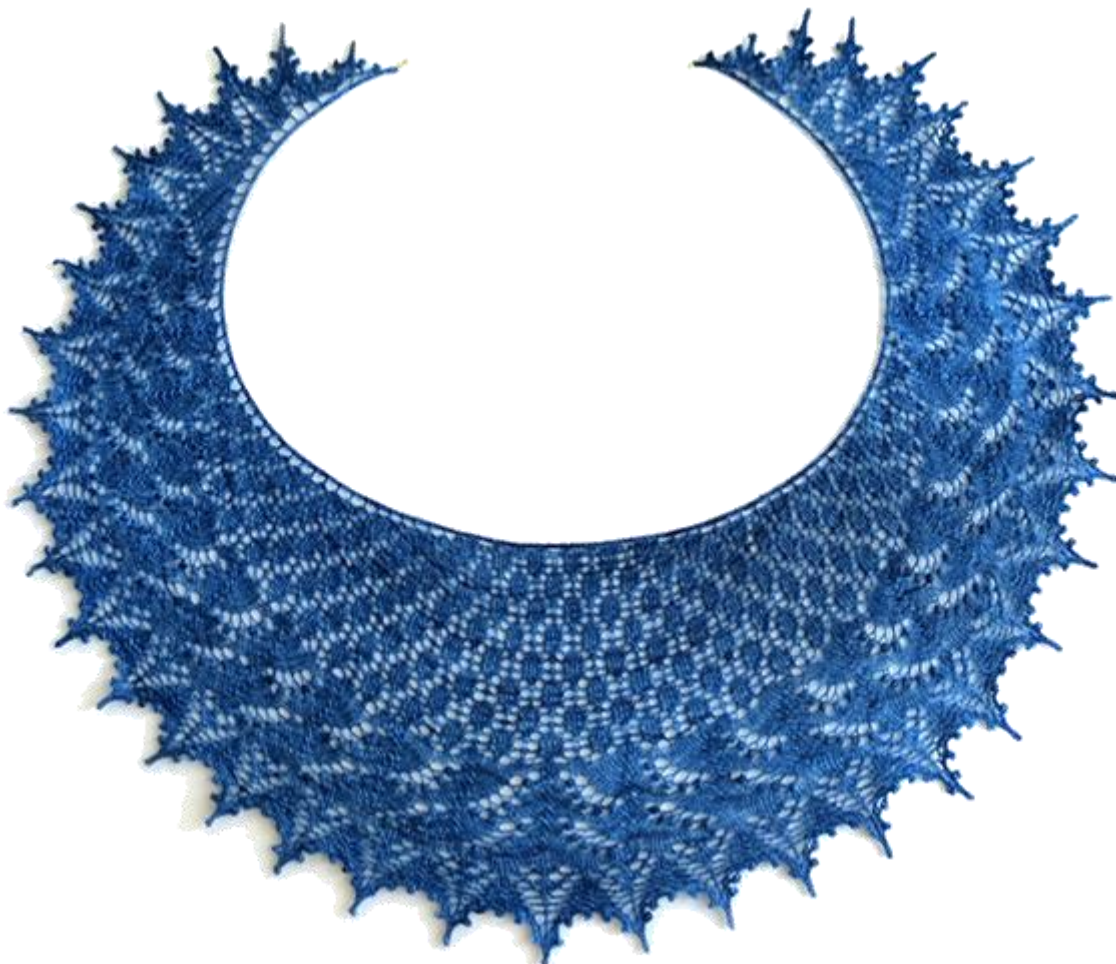


Evelyn Clark Swallowtail Shawl... Crescent Style



Adapted by Susan Rainey

[The Rainey Sisters Blog](#)

Lv2knit on Ravelry

I have made every effort to make this pattern error free!! If there are corrections, I will update the pdf link on my [Ravelry pattern page](#) and include the most current date. Please check the date before you start your project to ensure that you have the most up-to-date version!! Instructions for enlarging the Swallowtail are included!

VERSION DATE: 9-13-2016

Evelyn Clark Swallowtail Shawl....Crescent Style!!

Who doesn't love the Swallowtail? Thousands of knitters have made this beautiful shawl. I also love crescent shawls because they are so easy to wear. So, I decided to transform the Swallowtail into a crescent. Think of this as an homage to a knitting classic. *See original Swallowtail pattern for additional details.*

The difference between a triangular shaped shawl and a crescent is the rate of the increases. A standard triangular shawl increases 4 stitches every two rows. A typical crescent increases at a rate of 6 stitches every two rows.

In addition, I have found that I need to increase my needle size along the way to make the outer edge larger because of the circular shape. The following are recommendations – you may need to experiment with what works best for you and your own gauge!!

I started my crescents with a Size 4 needle, increased to a 5 after starting Chart A, changed to a 6 when I started Chart B, and a 7 when I started Chart C.

Many crescent shawls end up with an unsightly hump at the cast on area – my cast on reduces the hump.

I also recommend marking the center stitch with a removable clip-on marker or piece of waste yarn. This will help you make sure your charts line up. My picot bind off requires a crochet hook – size is not too important – just choose one that works well with your yarn!



My "Reduced Hump" Garter Tab Cast On:

Using waste yarn and crochet hook, make a chain of several sts. Using project yarn, provisionally cast on 2 sts by knitting through 2 bumps on the back of the chain. Turn. Tail is hanging to the left. K2, turn. Repeat for a total of 34 rows and 17 ridges.

Next row:

Release 2 sts from provisional cast on and place on holder or do this when the provisional sts are needed

Garter Tab Instructions Continued (tail should be hanging to the left):

WS: K2, YO (*this is a knit to purl YO*), skip 17th ridge, purl into edge bump of 16th ridge; YO, skip 15th ridge, purl into edge bump of 14th ridge.

Continue in this manner: YO, skip ridge, purl into edge bump of next ridge until you have purled into ridge #2; YO (*this is a purl to knit YO*), k2 from holder. End of row. (21 sts)

Next Row:

RS: K2, [(k1, YO, k1) into the YO on needle, k1tbl], repeat between brackets until 3 sts remain, (k1, YO, k1) into the YO on needle, k2. (39 sts)

WS: K2, YO (*this is a knit to purl YO*), purl to last 2 sts, YO (*this is a purl to knit YO*), k2 (41 sts)



If you've never done a garter tab cast on, check out this explanation:

<https://blog.tincanknits.com/2009/08/02/garter-tab-cast-on/>

Two Options: Standard and Stockinette

Both options – mark center stitch with a removable pin or waste yarn. This will help you make sure that charts line up. Select the stockinette or standard option. The first and last 2 sts are worked in garter stitch. *NOTE: the k1, YO, k1 is worked in the YOs from the previous row.*

Standard Option: Start Chart A (Budding Lace Chart) on Row 1. Complete **8 total repeats** of chart, going up one needle size after a few repeats (185 sts). Work the next 2 rows once to start Chart B:

Row 1 (RS): K2, (K1, YO, K1) in next st. Knit to last 3 sts, (K1, YO, K1) in next st, K2 (189 sts)

Row 2 (WS): K2, YO, purl to last 2 sts, YO, K2 (191 sts)

Cont Chart B on **Row 3** (go up one needle size). Proceed to Chart C (go up one needle size). Select Bind Off.

Stockinette Option – stockinette replaces the Budding Lace Chart

Work the following two rows **until you have a total of 191 sts**, going up a needle size about half way through.

Row 1 (RS): K2, (K1, YO, K1) in next st. Knit to last 3 sts, (K1, YO, K1) in next st, K2 (4 sts increased)

Row 2 (WS): K2, YO, purl to last 2 sts, YO, K2 (2 sts increased)

Start Chart B on **Row 3** (go up one needle size). Proceed to Chart C (go up one needle size). Select Bind Off.

Two Bind off Options: Standard and Picot

Standard Option

Row 18 (WS): Knit

Bind off per original Swallowtail instructions (Elastic Cast-off: k1, *k1, transfer 2 sts back to holding needle, and k2tog through back loops* across row). Weave in ends but do not trim until the shawl has been blocked. Wet block and pin the main points out very tightly. Dry completely, trim ends, and wear with pride!!

Picot Bind Off Option

Do not work a wrong side row after Chart C.

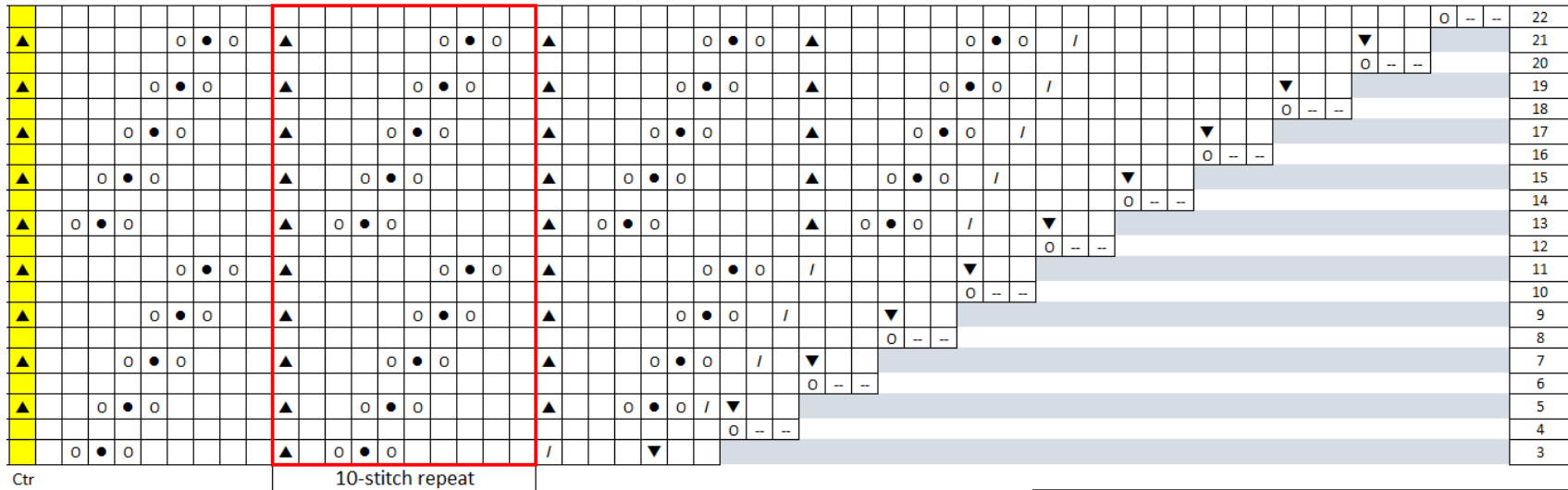
Picot Bind Off:

Place first stitch on crochet hook.

[Chain 4. Insert hook into Chain #2 and pull yarn up through Chain #2, then pull this loop through the st on the hook, repeat this with Chain #1. Bind off 2 sts using crochet hook. Yarn loop will be on the crochet hook.]

Repeat between [] to last stitch. Make one more picot. Weave in ends but do not trim until the shawl has been blocked. Wet block and pin the main points out very tightly. Dry completely, trim ends, and wear with pride!!

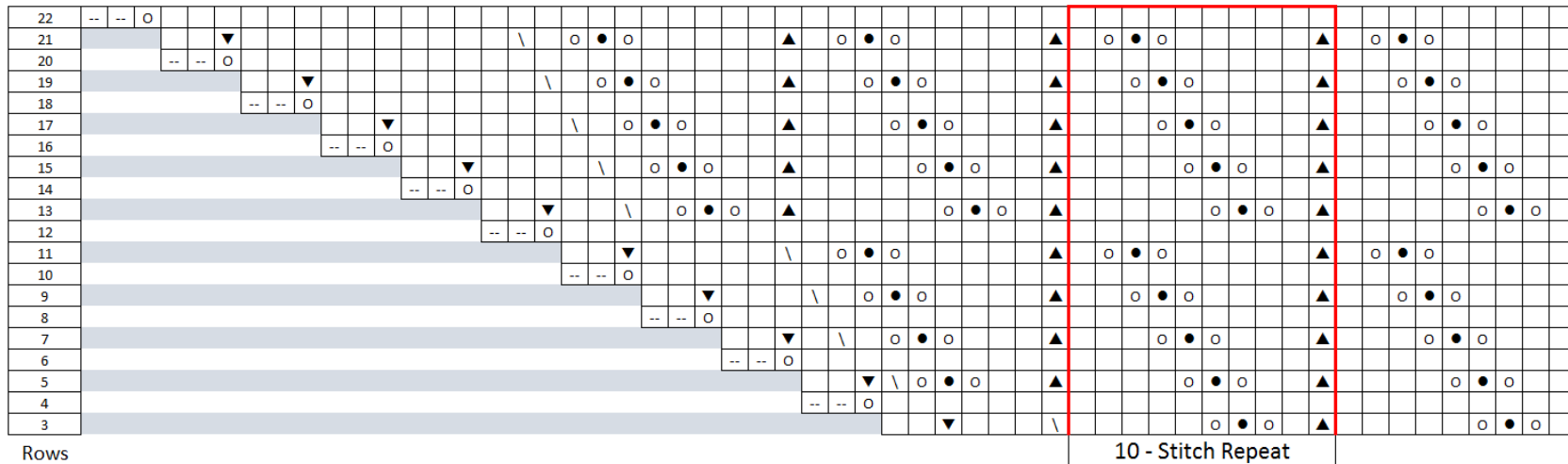
Chart B – Lily of the Valley Right Half (increase needle size), start on Row 3



Row 1 (RS): K2, (K1, YO, K1) in next st. Knit to last 3 sts, (K1, YO, K1) in next st, K2 (4 sts increased)
Row 2 (WS): K2, YO, purl to last 2 sts, YO, K2 (2 sts increased)

--	Knit on WS
□	Knit on RS, purl on WS
▼	(k1, YO, k1) in same st (inc 2 sts)
○	YO, yarnover
/	K2tog
\	ssk
▲	Slip 1, k2tog, pssso (dec 2 sts)
●	Nupp = loosely work (k1, YO, k1, YO, k1) into one stitch to increase 5 stitches; on the next row, purl these 5 sts tog

Chart B – Lily of the Valley Left Half



10 - Stitch Repeat

Center stitch is here

Enlarging the Crescent Swallowtail – Susan Rainey

Number of Repeats of Chart A and Number of Repeats of Nupp Section in Chart B	# of Sts Added With Additional Chart A Repeats	St Count Needed for add'l rpts of Chart B (mult of 20)	Stitch Count at End of Chart A/ End of Chart B Row 1&2/ End of Chart B Row 3	Sts Needed for Chart C <i>See note page 2</i>
8 – original pattern	n/a	n/a	185/191/197	Use original Chart C
9 (original +1)	18	20 (need 2 more sts)	203/209/217	24 (inc 4 sts) – use “increase” Chart C
10 (+2)	36	40 (need 4 more)	221/227/237	40 – Use original Chart C
11 (+3)	54	60 (need 6 more)	239/245/257	64 (inc 4 sts) – use “increase” Chart C
12 (+4)	72	80 (need 8 more)	257/263/277	80 – Use original Chart C
13 (+5)	90	100 (need 10 more)	275/281/297	96 (dec 4 sts) – use “decrease” Chart C
14 (+6)	108	120 (need 12 more)	293/299/317	120 – Use original Chart C

Revised Chart B – adds sts to match table above

Substitute the following for Rows 3 & 4 (2 sts additional increased) and follow remaining directions for the number of Chart A repeats added (see below). Continue using original Chart B starting on row 5.

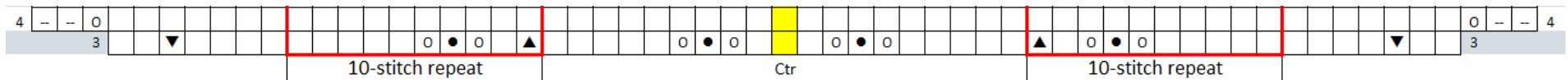


Chart A: 9 Repeats (one additional repeat of Chart A)

Substitute chart above – no additional changes (2 sts increased).

Chart A: 10 Repeats (2 additional repeats of Chart A)

Substitute Revised Chart B for Rows 3 & 4, plus on Row 3, substitute ssk for first and last ▲ (4 sts increased)

Chart A: 11 Repeats (3 additional repeats of Chart A)

Substitute Revised Chart B for Rows 3 & 4, plus on Row 3, substitute ssk for 4 ▲ evenly spaced: 2 before center st and 2 after (make substitution on repeats 4 & 9 before center stitch and rpts 3 & 8 after center st) (6 sts inc'd)

Chart A: 12 Repeats (4 additional repeats of Chart A)

Substitute Revised Chart B for Rows 3 & 4, plus on Row 3, substitute ssk for 6 ▲ evenly spaced, 3 before center st and 3 after (make substitution on repeats 2, 6, & 10 before center st and rpts 3, 7 & 11 after center st) (8 sts inc'd)

